

The Sandal Weekly

11th February, 2019



Messages

Responsible adults showing respect



Assemblies and PSHE lessons this half term have focused on the British value of 'Rule of law' and also the theme of respect.

A big part of this has been discussing why we have rules in school and why we should all show respect to each other, property and also to the rules of society and of school.

Please can I ask that you, as responsible adults, set a good example of this by parking responsibly and legally when dropping off and picking up your children?

Lots of our parents have young children so "But I've got two little ones" is not a reason for being able to ignore double yellow lines or double parking. The entrance into school must **not** be used as a turning circle, or a space to wait.

Finally, if you are parking on the 'turning circle' area, please make sure you observe the parking restrictions so that the school bus can get up and down without waiting.

If you do see irresponsible and illegal parking, please send a clear photo of the offending vehicle so that it can pass it on to the police. The owner of this car can expect a call...



The Sandal Weekly

11th February, 2019



Reminders:

Long Hair

Please remember that it is now school policy that all long hair is tied back. Thank you.

The library is open to parents and accompanied children on Wednesday mornings. Please sign in at the office as usual.

This Week

Monday, 11 th February	Ingleborough Y4 Residential Visit Meeting for current Y3 parents (6pm) in the hall. Whitby Y6 Residential Visit Meeting for current Y5 parents (6.30pm) in the Moor Room
Tuesday 12 th February	Showstoppers Jrs and SClub Jrs Production for Parents, 3.45pm
Wednesday 13 th February	PPG Y3&4 Bun Sale (Baking by Y3&4, but anyone can buy!), 3.20pm EYFS & Reception Parents Workshop, 6-7pm
Thursday 14 th February	Year 4 Assembly, 2.40pm
Friday 15 th February	Reception Superhero Day Great Learners Assemblies, 2.40pm School closes for half-term. Re-opens on February 25 th

Next Week

February Half-term holiday.

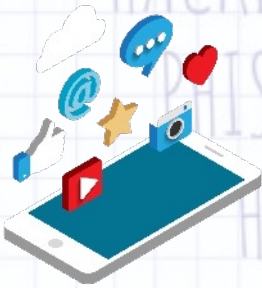
Coming Up

Tuesday, February 26 th	Year 5 visit to Bradford Industrial Museum
Wednesday, February 27 th	Key Stage 2 Parent Workshop, 6pm (Maths - Place Value and Mental Agility)
Thursday, February 28 th	Year 4 Swimming Begins
Friday, March 1 st	Great Learners Assemblies, 2.40pm
Week beginning 3 rd March	Y6 Parent's consultations (please note earlier dates)



WEST YORKSHIRE
POLICE

Online Safety Q&A Session For Parents



Creche available

*(important: please note that the
content of the session
is not appropriate for children)*



Prize Raffle



All parents welcome

Wednesday
13th March
6pm

